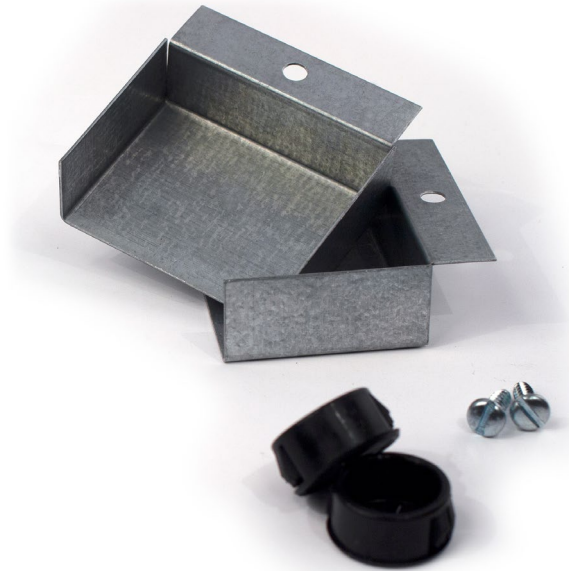


PRT00009T RMC-60 Remote Mount Kit (top of fixture)



Model #: PRT00009T

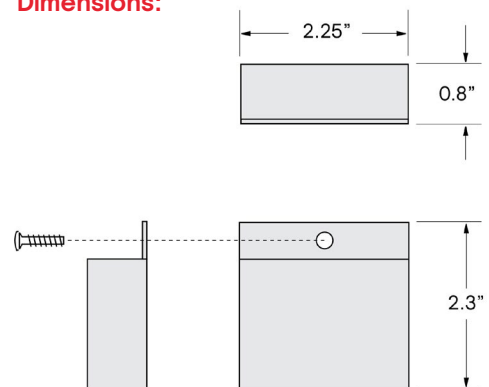
12NC: 913702451001

RMC-60 Remote Mount Kit (top of fixture)

Specifications:

- Kit includes two 22-gauge galvanized steel cover plates, two type B #8 x 1/2" slotted panhead sheet metal screws and two 1/2" trade size bushings.
- Kit is primarily used to facilitate on top of fixture installation of a standard Bodine emergency unit.
- Requires a 1/2" trade size (7/8") hole for bushings to be installed so wires can safely be fed through the hole and into the fixture for proper wiring.
- Covers are fastened to the fixture at the ends of the emergency unit with the two sheet metal screws.
- Complies with the National Electrical Code requirements.

Dimensions:



The information presented in this document is not intended as any commercial offer and does not form part of any quotation or contract. This product is designed for use with other Bodine branded products.